



Molewood Outlook

Spring Edition 2011

The Magazine for Molewood Residents – Sponsored by Lanes of Hertford



Welcome to Spring!

A message from the Editor



Aaaah! - Spring is in the air. Rebirth, renewal and change. Shiny, new, bright yellow daffodils, accompanied by deep red tulips, following on from the earlier snowdrops and crocuses. Summer veg are being sown & planted and bedding plants will soon adorn our front gardens.

But flowers, plants and Spring blossom are not the only newcomers to our estate. As I write I hear the regular beep beep of construction vehicles on the land beside Sacombe Road, next to the primary school. The ground is being cleared and flattened in readiness for the new homes that are to be erected any time now. By the time you read this, they may even have the started construction phase.

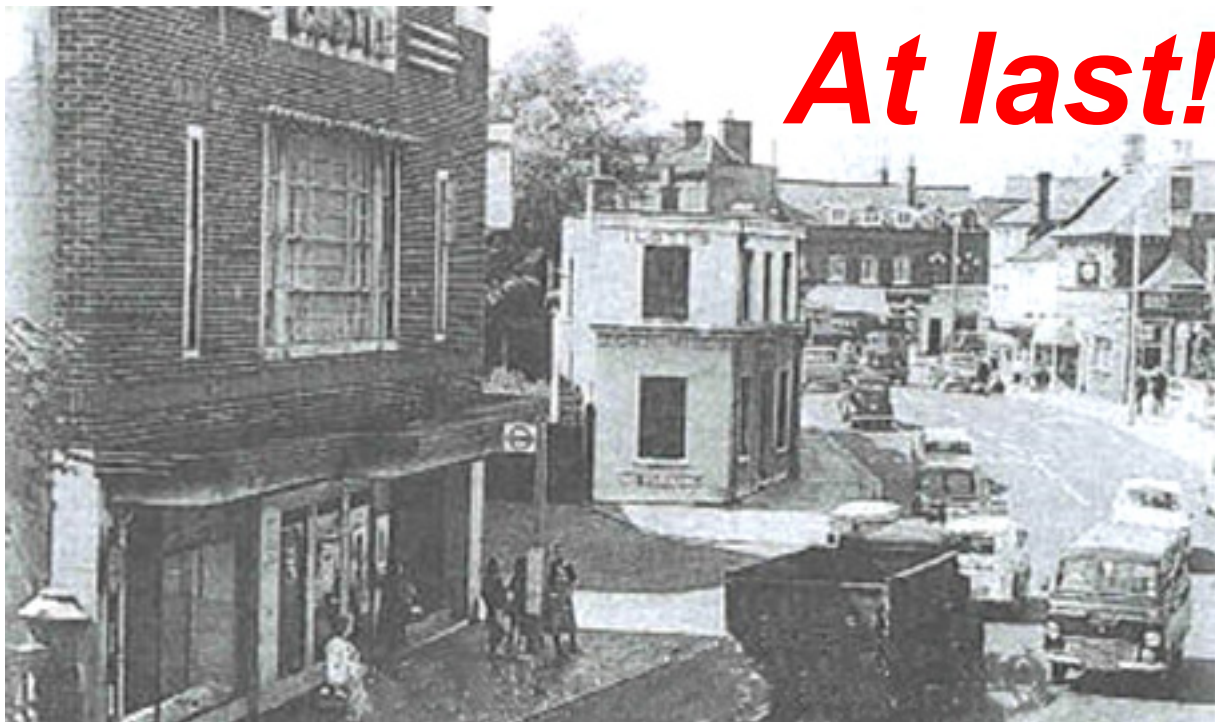
Before we know it our estate will have expanded, new neighbours will be settling in and potential new friends and acquaintances will be just around the corner. We have always been a welcoming estate – for example, once upon a time The Wick didn't exist, but as soon as it was built the new owners were welcomed as an integral part of our Molewood Estate. I'm sure that a similarly warm welcome will be extended to our new neighbours on the Sacombe Road in the near future.

The Molewood Residents' Association will be among the first to introduce themselves to our new neighbours, encouraging them to become active members of our community.

Which leads me to my final 'welcome' thought – Here at the Resident's Association we welcome new blood (*see, for example, our new 'kids' page', created by Alfie Graham*). So, why don't **you** contact us and get involved in the social life of our estate. Young, middle aged or old – you're all welcome. Don't be shy - If you're interested in taking a more active part in your local community, just get in touch (*details on back page*). The MRA is on the verge of new things (*more details in the next Molewood Outlook*)– and you could be part of it!

Oh, and don't forget to come along to our AGM on Thursday 12th May. Last year's turn-out was excellent (did it have something to do with the fish & chips?!). Get involved - All you need is a bit of enthusiasm!

Welcome to the first edition of Molewood Outlook for 2011. We look forward to the expansion of our estate and to the glorious colours that Spring provides. – Ed.



At last!...



...Hertford Has a New Cinema!

Some of you will have been around long enough to remember the Castle Cinema (pictured above, in the early 1960's – it's the building on the left) that stood in The Wash, precisely on the site of the new Hertford Theatre, formerly the Castle Hall.

The Castle Cinema closed its doors for the last time in 1959 and was demolished in the 1960's, leaving Hertford with just one picture house – The County Cinema, in Ware Road, opposite Tesco's.

Sadly, the County Cinema also closed in 1982, leaving us with no cinema at all. This unsatisfactory state of affairs has been alleviated slightly in recent years by the sterling work and commitment of the Hertford Film Club, but residents wishing to see mainstream movies have had to make the dreary journey to that soulless UCI conglomerate in the Galleria, Hatfield, or travel further afield to the deepest depths of Stevenage or Harlow.

For almost 30 years Hertford has been desperately in need of a cinema of its own again – and now it has one, fittingly on the site of the old Castle Cinema. Yes, the Castle Hall has been reborn as 'The Hertford Theatre' and it HAS A CINEMA! How many of you went to see 'The King's Speech' at The Hertford Theatre? Plenty of you, if every showing was as packed as the night I attended – and what a treat it was too! It's so nice to be able to walk down into the town and see a movie once again.

Get there early and you can buy a drink at the bar to take into the cinema itself. The seats themselves are comfortable, although as the seating is removable the steps up to the seats can be a tad noisy when latecomers arrive after the film has started. The state-of-the-art digital screen is very high quality – it has an excellent picture and it's a very good size. The

sound system is also superb. Finally, the ticket pricing is very reasonable (although the cost of my large glass of red house wine was possibly a little steep for me at £4.10 – I usually buy an entire bottle for less!).

Emma Parlow, from Hertford Theatre, says, *“Hertford Theatre has re-opened its doors following a £1m facelift by East Herts Council. As part of the refurbishment the theatre launched its stunning new digital cinema complete with Dolby surround sound and state of the art cinema screen.*

Audiences have already been treated to Oscar nominated films such “The King’s Speech” – a sell out 6 times, “The Social Network” and “127 Days”. In April and May you will find something to suit every age, from “Black Swan” starring the Oscar winning Natalie Portman through to “Gnomeo and Juliet” and “Tangled”.

Due to customer feedback from the 1st April, seating will be allocated at the point of sale. We are also running children’s cinema on some Saturdays and during the school holidays. We will also been running Parent and Babies screenings at 10:00am on selected days. Our latest brochure was released at the end of March and is currently on the website.”

So, ignoring my nit-picking, it’s a big, “Well done!” to the people behind the scenes at the new cinema – long may it continue! Do yourself a favour – book a ticket or two.

If you want to know what’s on, just visit Hertford Theatre’s website -

<http://www.hertfordtheatre.com/cinema/> - or phone the box office on 01992 531500, or pop into the Theatre when you’re next in town.

Bowls at the Bengoe Club



Ever fancied a relaxing game of Bowls? Well, why not take a stroll down the road and sign up at the Bengoe Club. A warm welcome is assured and you will be able to use their excellent facilities - available from the end of April to end of September.

All you need to do is join the Bengoe Club and then join their bowls section. The combined fee for doing this is less than the enrolment fee at other local ‘standalone’ bowls clubs. Once you’ve joined there are various avenues open to you. You can play socially (just turn up & play), or there are friendly matches on Saturdays and Sundays. The club enters teams in the East Herts Bowls League and in at least four Cup competitions per season. There are also opportunities to enter individually or in teams into other competitions, or even county events.

As if that wasn’t enough, the Bengoe Club runs its own internal championships – and don’t forget the benefits of the social side of belonging to the club. For example, there’s the 4-night trip to ‘Potters’ in Norfolk – a massive bowls resort - in October.

Membership of the Bengoe Club will also allow you to participate in a wide range of social events - bingo, quiz nights, race nights, and live entertainment throughout the year. Oh, and in case you were worrying that you might not be good enough, you don’t have to be a first-rate bowler, just keen will do! All abilities are welcome.

If you’re interested, give Peter Dougherty a call on 01992 550149

The 'Close' Connection Between Cowper and Desborough

Many residents will already know that Cowper Crescent is named after the Cowper family (once the richest family in England) and that Desborough Close is, likewise, named after the Desborough family. But there is a major local connection between these two families – and that connection is Panshanger.

Most of us know that Panshanger is the small airfield beside the A414 just outside Hertford. We see and hear the occasional light aircraft buzzing gently over our estate, on its way to land at Panshanger and (depending on your point of view) there is also the amazing/annoying sight and sound of the aerobatic plane practising its manoeuvres near to our estate in the Summer months.

But of course Panshanger is more than just an airfield.

Panshanger House stood proudly in the Panshanger Estate until 1953, one hundred and fifty years after it was built by the 5th Earl Cowper. Unfortunately, all that remains of the estate today is the beautiful landscape, originally designed by Capability Brown, then remodelled in 1800 by Henry Repton - and the ruins of the Orangery. The reason the house no longer exists is that it was inherited by Ethel (Ettie) Fane, niece of the final (7th) Earl Cowper, on his death. Ettie later became Lady Desborough, due to her marriage to Baron Desborough. Sadly, Lady Desborough's three sons died before she did and she herself passed away in 1952. So poor Panshanger House was promptly sold to a demolition contractor who knocked it down within the year.

The Cowpers were responsible for the creation of the beautiful Panshanger Estate and it ended its days with the Desboroughs! Luckily, a quick online Google search provides images of the once-impressive building (below). Looks like Hertford Castle's big brother, doesn't it?

If you have any stories with links to Molewood Estate (or Bengoe in general), why not get in touch with the editor at molewoodoutlook@hotmail.co.uk and we can see about including you in our next edition.





GARDEN TIPS



from *BENGEO NURSERY*

Spring, it seems, is finally in the air. Lots of us will now be thinking about the garden. It's an exciting time, full of promise and emerging colour. It's easy to get ahead of yourself though, for, although the Daffs are out, there's always that danger of a frost. Only those of you lucky enough to have the use of a greenhouse and some heating will be starting to think of summer bedding. If this is you, then now is the time to pick up small plug plants for early potting such as *impatiens* varieties (Bizzie Lizzies), Fuchsias and Geraniums etc. Whilst this is fun and hands-on, it's also a bit easier on the pocket once it's time to put out the hanging baskets and plant the tubs and borders.

That's not to say there's nothing right now for the rest of us. For instant colour, Primulas are now full in bloom, and brightening many a garden. With a bit of careful cleaning, Prims are good right up until summer bedding appears on the shelves. Gladioli and lily bulbs can be planted out now, making a colourful impact in summer borders.

It's been a long hard winter, and I know many of you will have lost plants. Especially upsetting is the loss of many large *Cordyline Australis* specimens. Unfortunately our cold January seemed too much for them. Some *Ceanothus* didn't fare well, and for those who like to gamble on leaving *Dahlias* in the ground, the loss would likely have been hard. All is not so gloomy though. Dahlia Tubers can be bought cheaply now and kept dry until some warmer conditions allow for planting, and pruning back a *ceanothus* back to the live wood (Only if it's been frost damaged) may give it another fighting chance. Cordylines? well. Maybe we should start treating them as an annual structural plant after all...

For anyone with any specific gardening questions or queries, my brother (Jake) or I will generally be around the Nursery most days. Don't hesitate to pop in and have a chat.

Max Shepherd

Bengeo Nursery

CALLING ALL WRITERS...

Are you a writer, or do you dream of being one, or perhaps you know someone who likes the idea of being a journalist, columnist or writer? Here at Molewood Outlook we are keen to provide space for local writers, with or without previous experience of publishing. You may be at primary school, or secondary school, or college, or not at school at all!

Whoever you are, if you're keen to write articles, or prose, or poetry and to see your work published, why not contact the editor at molewoodoutlook@hotmail.co.uk The only requirement is that you either live on Molewood (in which case you can write anything you like), or that you write about the area. We look forward to hearing from you.

ON THE BEAT



HERTFORDSHIRE

CONSTABULARY

Meet your local Police Safer Neighbourhood Team...



PC Alison Hutchin 1215
alison.hutchin@herts.pnn.police.uk



PC Laura Norman 614
laura.norman@herts.pnn.police.uk



PCSO Joanna Alston 6577
joanna.alston@herts.pnn.police.uk



PCSO Andy Nash 6588
andy.nash@herts.pnn.police.uk

Telephone: 01707 354192 (*state the name of the officer you wish to speak to*)

www.herts.police.uk

Neighbourhood Priorities are the most topical issues that local people have asked us to deal with. New priorities are set regularly. If you would like a say in deciding what the Neighbourhood Priorities should be, please call or email us. Engaging with local residents is important to us. We will soon be arranging a local meeting where you can meet the Neighbourhood Team and discuss any policing issues you may have. This will be publicised on our website and through the OWL messaging service (details below).

Crimes Figures

The crime figures show that we have recently been experiencing an increase in offences of theft from motor vehicles and non-dwelling burglaries. The offenders are gaining access by smashing a window of the vehicle and are generally stealing electronic equipment such as satellite navigation systems, laptops, mobile phones and MP3 players. The non-dwelling burglary offences involve offenders breaking into sheds and stealing items such as pedal cycles, tools, garden equipment, and sports equipment. Please make sure you remove any valuable items from your car and keep any outside buildings secure.

Important Crime Prevention Advice

Please remember – do not allow anyone inside your home who does not have an appointment. Any genuine company or service provider (ie water suppliers) will not visit your address without an appointment being made. If you are in any doubt ask for identification and call the company. If you believe someone is acting suspiciously at your door, call the police.

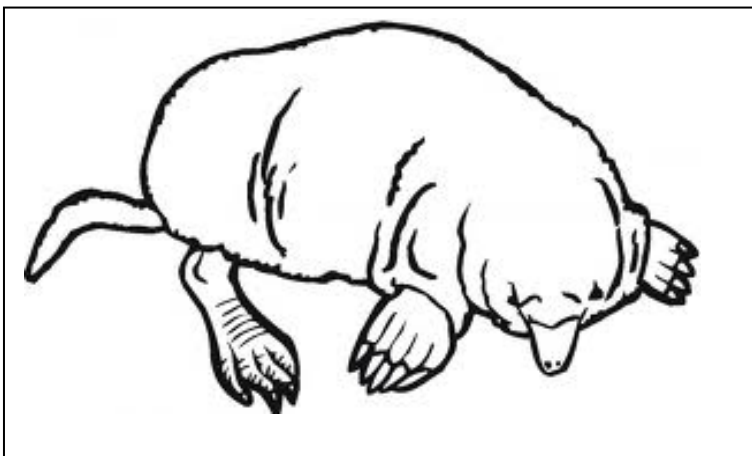
Please look at our new website to find out how to sign up to Community Messaging. This will allow us to inform you of any local meetings, crimes or incidents within your area and provide you with relevant crime prevention advice. We will be writing a regular column within this publication and look forward to keeping you up to date with any issues within your area and how we are tackling them. Please contact any of the above officers either by phone or email with any issue you wish to discuss.



Alfie's KIDS' CORNER ★

About Me...

Hi, my name is Alfie Graham and I have created this Kids' Page. I am 9 years old and I go to Bengeo Primary School. I live on the Molewood Estate and I have 1 brother and 2 sisters. My hobbies include horse-riding, playing netball, cubs and dance. I go the Royal Ballet School in Covent Garden, London every Saturday and I'm performing in Swan Lake at the Royal Opera House at the moment. I hope you enjoy this section of the Molewood Outlook.



Colour in the Mole!!

Alfie's WORD SEARCH – Can you find...
KIDS, PAGE, MOLEWOOD, WOODS,
DAFFODIL, BEES, FLOWERS, OUTLOOK,
SPRING

K	X	O	S	B	W	A	S	H	K
T	I	F	P	H	O	G	P	B	O
F	P	D	A	Q	O	G	R	Y	O
L	O	C	S	G	D	K	I	D	L
O	D	I	L	E	S	B	N	G	T
W	X	P	A	G	E	A	G	V	U
E	M	O	L	E	W	O	O	D	O
R	N	P	S	K	V	J	H	B	K
S	X	L	I	D	O	F	F	A	D
B	G	A	I	O	T	U	W	Q	D

Bin Weevils

I recommend the bin weevils website because it's really fun and easy to play on – plus you do not have to pay anything unless you want to be a member. On bin weevils you have a weevil. Its name is your choice and you can select its look, colour etc. You can go on adventures, buy things to personalise your bin (house) and if you want to use your pocket money, buy a membership from a shop like WHSmith. With a membership you can get house improvements, more nick naks and so on.

The Website:

www.binweevils.com

I interviewed Verity Graham about Bin Weevils and this is what she said: "I love bin weevils because you can change the colour of your bin, you can plant flowers in your garden, there's a place to trade unwanted items to mulch (money) you can race on the race track and maybe if you're fast enough you might get a trophy!!"

CELEBRATING SHEILA



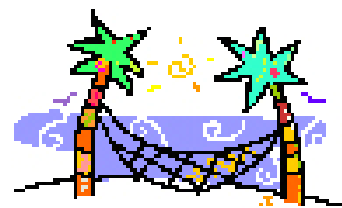
Well, well, well! – local resident Sheila Hand is in her 80's, but you'd never know it! Here at Molewood Outlook we thought it was high time we celebrated her amazing achievements.

From swimming with dolphins in Egypt, to swimming 66 lengths not too long ago, Sheila makes sure she's always 'in the swim'! Not content with that, Sheila visited China two years ago and she plans to go back again in the near future. Nearer to home, Sheila has been an active member of U3A for nineteen years and she organises Tai Chi groups and Aquafit swimming. She has taken part in Bikeathon and Swimathons for several charities. Where DOES she get her energy from?

She's an inspiration to us all – Go Sheila! Go Sheila!



Oasis



You may not be aware of the newly-refurbished Oasis Café, based at the Methodist Church, Ware Road, Hertford. They've made a lovely job of it and now it's open to all. "Bring family and friends and little ones to enjoy teas, coffees and light snacks."

This welcoming environment for all ages is open weekdays, from 9am to 3pm.

OUTLOOKSPORTS

Brian Aggett – Bengoe's Personal Trainer

You may have seen him pounding the pavements of Bengoe, or 'jogging' (at some quite unnatural speed!) along the tow path to Ware, or even putting his trainees through their paces on Hartham Common or at a local gym.

Brian is one of our community's Personal Trainers, Athlete and Fitness Coach. With a time of 56.0sec, the 400 metres hurdles is his event, although recently Gym-Athlon has been his main area of focus (google it!).

He specialises in personal training (all ages and fitness levels), injury rehabilitation, sports massage, nutrition, weight management, strength and conditioning.



What sets Brian apart from other Personal Trainers are his calm, supportive approach (he's definitely not the 'drill sergeant major' type) and the great care he takes over planning each individual's personal regime in a holistic way, to include training, nutrition and diet.

Brian's clients (including one of next year's Olympic competitors) appreciate the depth of his subject knowledge and its application to their own personal needs. He has a team of personal trainers who can be seen on his new website <http://www.thetraininglab.net/>

If you need a local personal trainer, why not give him a ring on 07832 033 529 – and mention *Molewood Outlook Magazine* for a 10% discount on your first session!

If you want to get somewhere, go to Brian. He's like a Wii Fit, but he's real 😊

Calling all Sporty Types – tell us about yourself and you too could appear in Molewood Outlook molewoodoutlook@hotmail.co.uk

***Don't forget the Molewood Residents' Association Annual General Meeting
Bengoe Infants' School - Thursday 12th May
7.15pm.***



Rat-run latest...

Readers will know that our neighbours in the Byde Street area are fed up with the traffic that passes up and down their road during the morning and evening rush hours. They've been asking the County Council to do something about this for years and now representatives of the MRA are working with them to find a solution that will suit us all...

The Bengoe Rat Run is a fall-out from the north/south traffic passing through Bengoe on its way to schools, or employment in the town, or to turn west onto the A414, bottle-necking at Old Cross. With motor traffic steadily increasing over the years, pressure first built up in Port Vale, which provided a convenient "cut through" to the west. The Port Vale through road was closed in 1979.

Later, when the County Council installed traffic lights at Old Cross to assist pedestrians and to regulate the competing traffic flows from St Andrew Street, Old Cross and The Wash, the consequence was longer queues backing up Port Hill and the transfer of the problem to the next route of least resistance - through Upper and Lower Bengoe.

In 1997 the District Council tried to stop this by putting "Access Only" signs at the entrances to the estate but since the police had said publicly that they could not realistically enforce such restrictions they had little effect.

As traffic on the now established "Rat-Run" increased and station car park charges encouraged more commuters to park up the hill, the residents of Byde Street and Nelson Street in particular started the Bengoe Traffic Campaign, with the aim of putting pressure upon HCC to protect their streets from the excessive through-traffic, the commuter parking and the bad behaviour shown by some out-of-area drivers.

In 2001 a questionnaire sent out by the District Council to those living in the directly affected area showed that 49% of residents were in favour of a barrier in Byde Street, 37% were for other traffic calming measures and 14% were content to take no action, at all. As no option had an overall majority the District and County Councils decided to take no further action.

Perhaps not surprisingly, those most affected were disappointed by the decision and in 2005 the Lower Bengoe Residents' Association (LoBRA) was formed. Readers will know it to be an energetic and forceful body.

In 2006 the County Council again surveyed residents of Lower Bengoe on a number of traffic management schemes which led, in April 2008, to the trial introduction of the one-way system in Tower Street; the limited no-right turn into Cross Road and parking restrictions in Byde and Balfour Streets.

Although the estate was affected by these trials - the no right turn at Cross Road causing more traffic along The Avenue in the morning - in July 2008, the Association was taken by surprise by a decision of the East Herts Highways Joint Member Panel (HJMP), following a petition and video presentation by LoBRA, to trial the road closure of Byde Street.

The MRA was quick to respond and organised a petition which gained 832 signatures, one of the largest presented to the district Council, asking the Council to reverse its decision and to join with the Bengoe community in finding communal agreement on the management of traffic through north Hertford.

To everyone's considerable relief, at its meeting in October, the HJMP agreed to delay the planned trial closure until further modelling of Hertford traffic flows had been made as part of the Hertford & Ware Urban Transport Plan.

The Urban Transport Plan was published in July 2010 and with it the results of a public consultation made by the County Council in April 2010. That part of the consultation relating to Bengoe Traffic showed that of those people living in Hertford & Ware who expressed an opinion, 58% said that the Council should "do nothing", ie, leave Bye Street open, as it is now; 64% of the people living in Bengoe said the same, as did 41% of the people living in Lower Bengoe.

The consultation report also spoke of the public urging the Council to find a technological solution to the problem by using the vehicle activated signs and automatic number plate recognition (VA & APNR) systems regularly seen on the highways nowadays. The Urban Transport Plan discussed this approach and included projections of the costs involved.

MRA wrote a long and detailed argument to all members of the HJMP (County and District Councillors) asking them to put an end to the continuing threat of the closure of Bye Street.

However in its conclusions, HCC ignored the results of the consultation and recommended that the question of closing Bye Street should be left until traffic surveys taken before and after the opening of the new Sainsburys store in Hartham Lane could be compared. Then, if there was an traffic increase of more than 20%, Bye Street would be remain open, but if the increase was less than 20% then the HCC Officers would choose between a trial closure of Bye Street or looking into the viability of a technological solution. At the end of a long and difficult discussion on the subject, councillors decided that should the increase in traffic be less than 20% the matter would be referred back to the Panel for consideration in the light of the technological options at that time.

By chance, on leaving the Council Chamber at the end of the discussion, members of MRA and LoBRA spoke with each other and found they had much in common - particularly that the closure of Bye Street was not an acceptable solution; that the road should remain open for the benefit of the whole of the Bengoe community and that the "rat-runners" who ignore the Access Only signs at the entrance to the Molewood estate should be identified by means of an ANPR system and be subjected to financial penalties. The two associations have since met and agreed to collaborate in putting their views to the HCC.

Both associations have made independent enquiries into the use and cost of ANPR technology and are confident that the systems are both effective and feasible. They were also encouraged to learn that the Department of Transport had recently consented to Cambridge County Council taking the powers to fine rat-runners identified by an ANPR system.

Our County Councillor, Sally Newton, has been in discussions with the Hertfordshire's Executive Member for Highways & Transport, Stuart Pile, who has promised support in searching for a technological solution. For the future, both associations hope to meet Sally and the HCC officers as soon as the officers have clarified the status and extent of the associated traffic regulations.

Hopefully, there will be further movement to report at the Association's AGM when the Committee hopes that Sally Newton and Peter Ruffles will be able to attend and to discuss the Bengoe Traffic Problem along with any other matters in the minds of members.

If you are concerned for the Rat Run and would like to be involved a little more closely - and perhaps practically should the need arise - then do contact our working group who are Tom Busby (581592), Colin Underwood (552007) and Nick Gough (423723).



Bengeo Playgroup

Registered Charity No:1134075



Fun Day

Saturday 14th May

1pm to 4pm at Bengeo Primary School



Raffle
Beat the Goalie
Lucky Dip
Refreshments
New Books

Homemade Cakes
Face Painting
Ride on Toys
Hook-a-Duck
Craft Activities

Bottle Tombola
Bouncy Castle
Craft Items
Clothes & Jewellery
Much, much more...



Admission: £1 for Adults - Children free

If you need to contact the Molewood Residents' Association for any reason, please feel free to get in touch with one of the committee members listed below...

★ MOLEWOOD RESIDENTS' ASSOCIATION COMMITTEE MEMBERS ★

NAME	ADDRESS	TELEPHONE	EMAIL
Chairman Brian Laming	49, Cowper Crescent	583512	blaming@hotmail.com
Treasurer Nick Gough	11, Lys Hill Gardens	423723	ndgough@ntlworld.com
Secretary Joan Murrell	38, Cowper Crescent	587595	-
Marie Archer	55, The Wick	581965	m.archer4@ntlworld.com
Bryan Ayres	5, Cowper Crescent	586512	
Geoff Church	Cowper Crescent	07969424036	molewoodoutlook@hotmail.co.uk
Peter Dougherty	47 The Wick	550149	p.pjd@btopenworld.com
John Edwards	8, The Wick	558247	j.suttill@yahoo.co.uk
Rachel Ogier	103 Cowper Crescent	313207	rachel@ogieronline.com
Alan Sewell	16 The Avenue	422524	aasewell@aol.com



Don't forget the AGM – *with added wine & cheese!*

MOLEWOOD RESIDENTS' ASSOCIATION

NOTICE OF ANNUAL GENERAL MEETING

Thursday, 12th May 2011 at 7.15 (for 7.30) pm

At Bengoe Infants School

AGENDA

- 1. Introduction**
- 2. Minutes of 2010 AGM**
- 3. Any Matters arising therefrom**
- 4. Chairman's Report**
- 5. Financial Report**
- 6. Election of Officers:-**
 - **Chairman:** Brian Laming is available for re election
 - **Secretary:** Joan Murrell is available for re election
 - **Treasurer:** Treasurer, Alan Sewell has been proposed for election
 - **Editorial Team:** Nick Gough and Geoff Church
 - **Examiners of A/Cs:** David Brooks and Colin Crannis are currently our Examiners
- 7. Election of Committee Members:**

The following are existing members: Marie Archer, Brian Ayres, Peter Dougherty, John Edwards and Rachel Ogier. *More nominations are invited (needed to bring us up to strength).*
- 8. Invitation to any elected representatives present to address the meeting.**
- 9. Any Other Business**

Refreshments (and we hope some Entertainment) will be available after the conclusion of the formal Business.

With many thanks to **Lanes Property Agents** (Hertford) for their support in producing this edition.

Lanes would be delighted to hear from you, should be considering a move in the near future – contact James Luton on 01992 582 000 or at james.luton@lanes-sales.co.uk for professional, honest and incisive marketing advice.



